



WATERPROOF LAMINATE FLOORING

Job Site / Emplacement

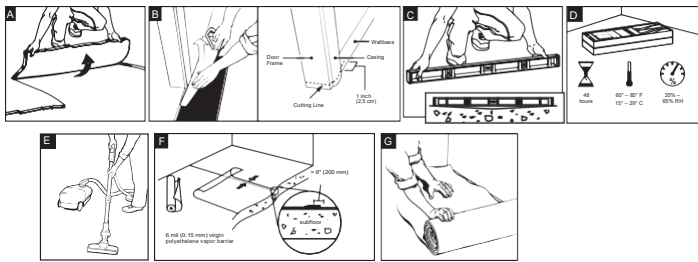
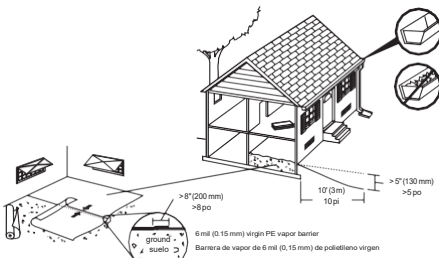
Site Requirements

H2O Plus Laminate is a durable floor covering, not intended as structural material. H2O Plus Laminate requires a clean, dry, secure subfloor that meets building codes. The following requirements are not intended to supersede federal, state or local building codes, but as with many other interior finish products, may require modifying existing structural components for successful installation. Owner assumes responsibility for compliance with all building codes.

H2O Plus Laminate flooring is suitable for use in climate controlled (35-65% RH and 60-85° F) indoor installations only and should not be installed in rooms with floor drains or sump pumps. H2O Plus Laminate floor can be installed above, on or below grade. A moisture test is strongly recommended to determine if high moisture exists in the subfloor. When using a calcium chloride moisture test for concrete subfloors (ASTM F 1869), values must be $\leq 5 \text{ lbs}/1000\text{ft}^2/24\text{-hr}$ or $< 80\% \text{ RH}$ with an in situ probe (ASTM F2170). Moisture readings of wood subfloors must be $\leq 12\%$.

Acceptable job site conditions, including relative humidity and subfloor moisture conditions, must be maintained throughout the lifetime of the flooring.

H2O Plus Laminate flooring is installed as a floating floor and requires the use of T-moldings in doorways less than 32-inches (0.81m) or if the installation changes directions through the doorway (regardless of doorway size) and in rooms 50 feet (15.24m) or larger in length or width. Floor movement must not be constrained by glue, nails, screws, hardware or other fixed obstructions. This product must be installed in accordance with these installation instructions.

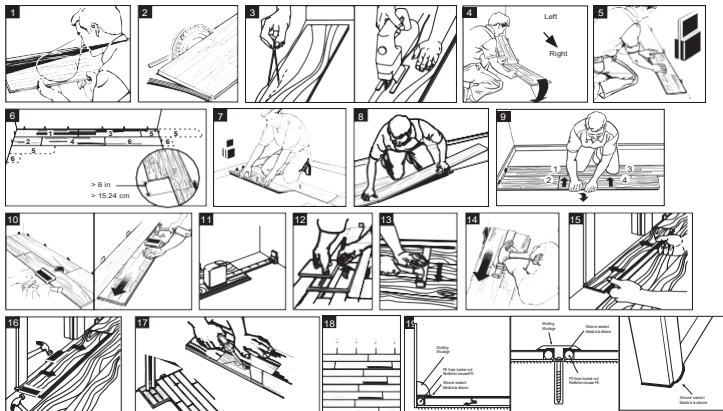


Site and Material Preparation

Site and Material Preparation

- Remove carpet and padding. Also remove any wood flooring installed on concrete. Do not remove products unless they are asbestos-free.
- Undercut door frame and wallbase. Slide the flooring at least 1/4" underneath the door frame and wallbase. Also leave a concealed 3/8" minimum expansion space under each.
- Remove bumps or peaks in subfloor and fill depressions with floor leveling compound to ensure no more than 3/16" unevenness per 10 foot span.
- Acclimate unopened product before installation. If there is no time for acclimation, there should be no more than a difference of 25° F and 20% relative humidity between the stocking/transportation environment of the flooring and the final installation environment of the flooring.
- Clean debris from subfloor before installation.
- For concrete subfloors, install vapor barrier with overlapped seams of 8" or more.
- For planks without attached underlayment, install over single layer of underlayment appropriate for H2O Plus Laminate floors.

Flooring Installation



- Inspect each plank. Floor should be installed blending planks from several cartons at the same time to ensure good color and shade mixture throughout the installation.
- For the first row along straight walls, remove the tongue on all long side joints and on the short side of the first plank only.
- For uneven walls, trace contour on tongue side of plank and cut.
- Assemble the first row tongue side toward wall. Insert the end tongue into the end groove and rotate downward to assemble. Keep the planks aligned and the joints closed.
- Two spacers thick side to thick side equals 3/8".
- Provide a 3/8" space for expansion on all sides. First piece must be at least 8" long. Start new rows with pieces trimmed from previous row. Ensure at least a 6" end joint offset.
- At a slight angle, insert the tongue of plank 2 into the groove of plank 1 until the H2O Plus Laminate edges meet, and then rotate down until the joints lock.
- Join the short end of the plank first. There will be a gap on the long side joints when the plank is rotated down.
- Raise the outside edge of the plank upward approximately 1". Maintain this angle as you push the plank in until the H2O Plus Laminate edges meet. Rotate downward on the plank until the joint locks. Repeat these steps to complete the installation.

Installation Tip: Place a carton of planks across the end of the row being installed to keep installed planks in place during installation.

- Alternate Tap Method: Align the tongues into the grooves of the long and short sides of the planks. Install the long side first with a tapping block by tapping lightly along the long side until the joint is closed tightly. Then tap the end using the tapping block into a locked position. Note: Uneven tapping or use of excessive force may damage the joint.
- Ensure there will be a 3/8" gap (after the joint is closed) to the wall for expansion.
- For the last row, align the plank to be used on top of the second to last row. Using a full width plank as a spacer, trace wall contour and cut plank.
- For the last row, install the long side tongue into the groove with the end joint aligned. Using a pull bar and hammer, work evenly along the length of the plank and lightly tap the joint closed.
- After tapping the long side joint closed, tap the short side closed, using a tapping block or a pull bar.

Installation Under Doorway Frames

- Slide plank under pre-cut door frame.
- Tap the long side joint closed first. Then tap the end joint closed.

Installation Around Fixed Objects (Such as Pipes)

- Allow 3/8" expansion space around pipes or other fixed objects.

Finishing the Installation

- Remove all spacers.
- Create a watertight seal by applying flexible 100% silicone sealant to the entire perimeter of the installation. DO NOT use acrylic sealant.
 - First fill all expansion spaces with 3/8" compressible PE foam backer rod and cover with silicone sealant.
 - Prior to installing the moldings, apply silicone sealant to the portion of the molding or transition that will contact directly with the H2O Plus Laminate flooring surface.
 - Install moldings and immediately wipe away any excess silicone sealant.
 - Apply silicone sealant at connections to doorframes or any other fixed objects.

Care and Cleaning

Place felt floor protectors under legs of moveable furniture. Chair casters should be rubber – not plastic or metal. Place walk-off mats at entrances. Dust mop as primary cleaning method. Occasionally damp mop with water only, using a well wrung out mop; DO NOT pour liquid directly on floor or use an excessively wet mop that will puddle or leave moisture standing on the floor. If needed, use a solution of 1 cup of vinegar per gallon of water OR 1/3 cup non-sudsing ammonia per gallon of water. DO NOT use detergents, abrasive cleaners, soaps, waxes or polishes. Use correct hard surface vacuum tools. DO NOT use rotating beater bars, floor scrubbers, steamers, jet mops, buffers or similar products. Wipe up spills immediately. DO NOT allow topical moisture to remain on the floor longer than the time specified in the product warranty.

For detailed product specifications, please contact Technical Services at 888-387-9881, option 3. For service under this warranty please notify your retailer in writing. Be sure to describe the specific problem and to include a copy of your invoice. Your retailer will take appropriate action, including notifying Mohawk, if necessary. Mohawk® Flooring is manufactured and distributed by Unilin North America LLC 550 Clontarf Drive Thomasville, NC 27380